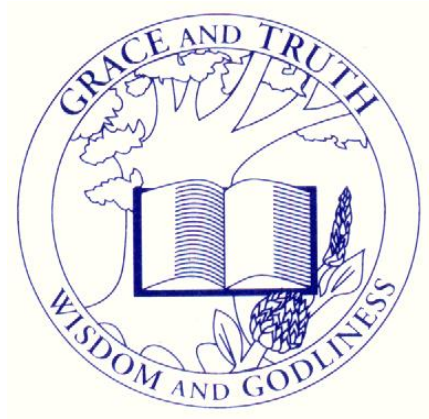


Otamatea Christian School



Prospectus

Address:	98 Hurndall St – Maungaturoto (Behind Congregational Church)
Phone:	(09) 431 8487
Email:	otamateachristianschool@gmail.com
Website:	www.otamateachristianschool.com
Principal:	Mark Bell
Pastor / Board Chairman:	Paul Chambers

Welcome

Our Team:

Mark Bell is our Principal, Administrator, Senior Learning Centre Teacher, and Boys Dean.

Lynette Bell is our New Entrant & Junior Learning Centre Teacher, International Students Director, Homestay Coordinator, E.S.O.L teacher and the Girls Dean.

Paul Chambers is our School Pastor and Chairman of the Board of Governors.

Kayley Polwart is the Junior School Monitor and School secretary

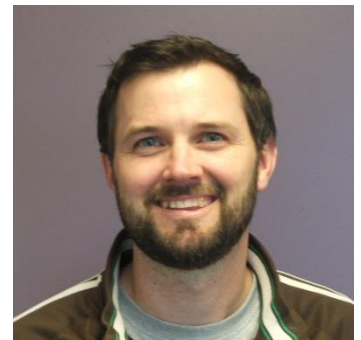
Sam Daniero is our Senior School Monitor

Our Board of Governors members are:

Paul Chambers
Mark Bell
Philip Leaf
James Rout
Kayley Polwart

Chairman
Principal / Staff Rep
Finance / Parent Rep.
Maintenance / Policies
Secretary / Enrolment & Advertising

Our extra School Monitors/Supervisors are: **Delwyn Chambers, Julia Leaf, Tamara Rout and Noeline Cullen**. We also have volunteer Readers and Helpers in the school who we greatly value and appreciate their time and effort.



Vision: “Tomorrow’s Community Leaders for Life”

The vision of our school is based on the school motto:

“Grace and Truth, Wisdom and Godliness.”

We deliver the A.C.E Christian education programme to our students which equips them spiritually and academically to lead, impact positively and shine the light of Christ on the lives of each other, the local community and beyond.

School Mission Statement:

Otamatea Christian School has a threefold mission:

- **To affirm basic Christian values by training students in the way they should go**
- **To equip students to lead others**
- **To provide a quality academic education**



Principals Address



Welcome to the Otamatea Christian School family. We work hard to create a safe, supportive, family atmosphere at our school. Our older students are actively encouraged to take a leadership role and responsibility with helping to care for the younger student's in the school. We welcome volunteers from the wider community who model Christian behaviour, which is an important component of the school's Christian character, along with consistent biblical teaching.

Our Christian based academic programme is designed to meet each student's individual needs and with academic and pastoral support each student is empowered to explore their gifting's and strive for high biblical and academic standards.

We are especially happy to be able to offer international students the opportunity to benefit from our Christian centred, highly successful academic program, with a family

atmosphere in our safe quiet rural setting. International students bring a cultural richness to the school.

In our small school setting each student has a greater opportunity to participate in and develop a wide range of opportunities including representing the school, going on mission trips overseas, and gaining academic awards.

We welcome new enquires and anyone wanting to visit the school. To make an appointment for a tour or to discuss an enrolment, please contact the school.

Mark Bell – Principal.

Our School Timetable



8:45am	School Starts.
8:45-10:30am	Learning Centre – A.C.E pace work.
10:30-10:45am	Morning Break.
10:45-12:15pm	Learning Centre – A.C.E pace work.
12:15-1:00pm	Lunch Break.
1:00-3:00pm	Afternoon Programme.
3:00pm	School Finishes.

On Wednesday the school finishes at 2pm, and on Thursday mornings we have assembly with our School Pastor. Parents are welcome to join us during this time.

Parental Involvement

Parents are always welcome at the school, we have parent meetings once a term to inform parents and build a stronger school community. Parents participate in regular working bees, sports days and other school activities. Teachers encourage communication with parents about their child's academic, physical, social and spiritual development. We also hold parent teacher interviews and parent meetings every year.

Convention

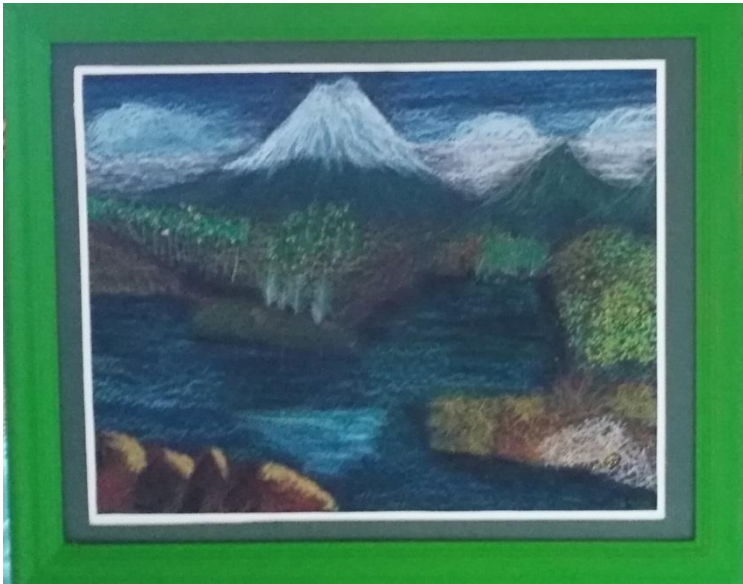
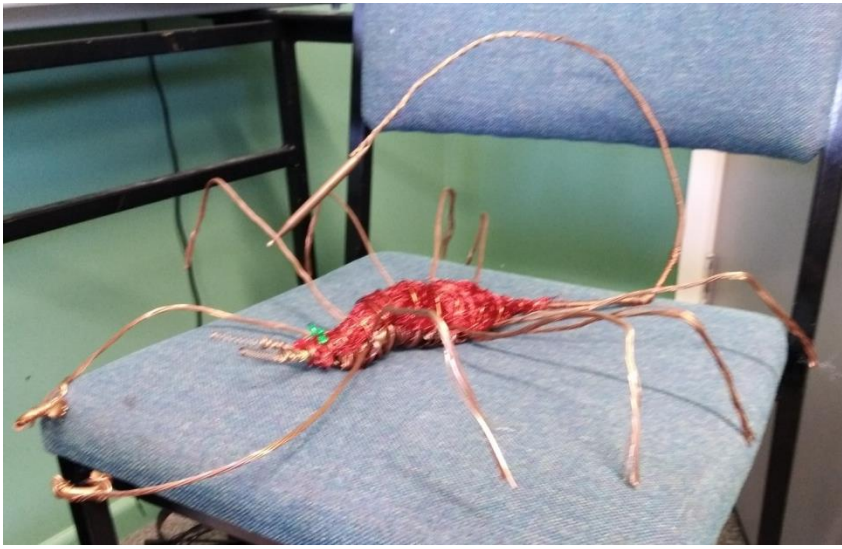
Students from 11 years old and over attend the National Regional Convention, held once a year in September. Convention is an event where students use their gifts and abilities that they have discovered and developed over the year. Students may choose from over 140 different events to compete in. The events are spread across six different categories: Academics, Athletics, Arts (visual, media, and manual), music, scripture and platform.

The students enjoy evening rallies, which provide spiritual feeding and nurturing as well as the opportunity to view command performances. The students gain much in viewing others performances and entries, as well as competing in team academic, scriptural and sporting events.

Students need to gain marks over 70% to receive ribbons for 1st, 2nd or 3rd placings. There are also trophies for overall winners in each category. The hard work and diligence of the students, along with support from teachers, parents and community members who work alongside the students during the yearly preparation, is an intrinsic part of the success the students' experience.

Some of the work they completed (below) is mixed media art, photography, cross stitch, wire sculpture, wood work and sheet metal work.





Curriculum

The Accelerated Christian Education program is a total package, self-instructional curriculum covering all year levels and core subjects from Kindergarten through to Year 13 level 3. For over 30 years the A.C.E. curriculum has been successfully used by thousands of students in NZ. It is now used in over 7,000 Christian schools in over 100 countries as well as being used by thousands of home-schooling families. Children are assessed and graded on the basis of their achievement level in each major subject, rather than on their age. This means less able students are not so likely to develop low self-esteem and more able students can be more fully extended.

ACE has an excellent program for teaching young children to read; "Reading Readiness" and ABC's which use a phonetic approach to the alphabet. Once children are able to read, they are presented with a series of instructional workbooks (PACE's) in each subject. The concepts and knowledge in each PACE build upon each other. Each PACE is mastered before a student moves up to the next one, thus eliminating gaps in learning.

Senior students, upon completion of a subject, receive credits, which when enough have accrued, qualify them for an ACE Certificate. Senior students participate in National Student Convention and have a choice of participating in South Pacific Convention and International Convention competing against other A.C.E students around the world in a wide variety of disciplines in Academics, Athletics, Visual Arts, Manual Arts, Performance Arts, Media Arts, and Music - vocal and instrumental.



International Students

We are a school with a warm family atmosphere, and welcome students from all countries and ethnicities. We have international student accreditation through NZQA.

Students are provided with the Accelerated Christian Education Curriculum (A.C.E) which is based on the word of God. This international curriculum offers five ACE Certificates available to students in New Zealand, with the Level 3 (year 13) Academic Certificates enjoying formal recognition by Universities in New Zealand – Te Pōkai Tara. Our qualifications are recognised by the NZ Universities Vice Chancellor Committee as equivalent to the NCEA levels 1, 2, and 3. We accept enrolments at the start of any term throughout the year due to the flexibility and individualisation of our program.

For more information on our international students programme, or to enrol, please go to our website at www.otamateachchristianschool.com or contact our international students' director – Lynette Bell at lynettebellteach@gmail.com or otamateachchristianschool@gmail.com





Our Environmental Project:

In summer we spend a lot of time in our bush reserve, located next to the school. We learn about collecting, growing and planting seeds – re-vegetation, weed and pest control, creating and exploring native bush.

Speech Contest: Every year the Paparoa Lions Club holds an annual speech contest, in which year 5 to 8 students participate where they gain the experience and skills of public speaking and receiving awards.



Kapahaka Maori Culture Programme

We learn and practice hymns, action and poi songs, which we perform at our end of year prize giving, and various opportunities throughout the year. The songs taught are in line with our school's Christian ethics and values.

Location: Our School is set in a stunning rural environment, with magnificent views of the rolling hills and farmland.



Cross Country & Pet Day: The school farm provides an excellent location for our annual cross country and pet & flower day.



We thank you for your interest in our school. If you would like more information, or to enrol, please contact us:

Address: 98 Hurndall St – Maungaturoto
(Behind Congregational Church)
Phone: (09) 431 8487
Email: otamateachristianschool@gmail.com
Website: www.otamateachristianschool.com
Principal: Mark Bell
Pastor / Board Chairman: Paul Chambers

